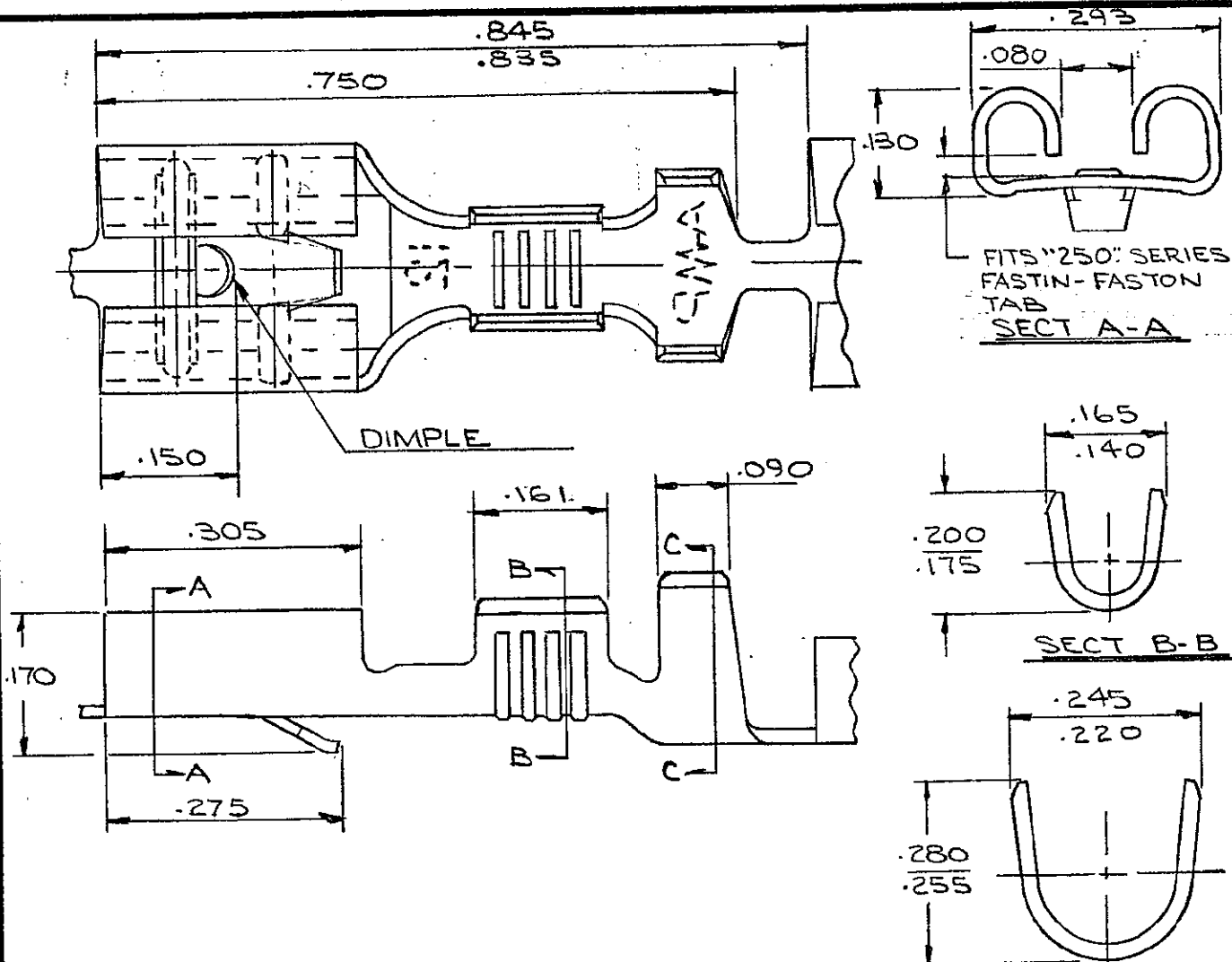


42904



FITS "250" SERIES
FASTIN-FASTON
TAB
SECT A-A

SECT B-B

SECT C-C

CONTINUOUS STRIP, ON REELS

WIRE SIZE AWG	INSULATION RANGE	TAB THK. ±.001	MATERIAL AND FINISH	TERMINAL NUMBER
16-12	.150-.190	.032	BRASS-NONE	42904-1
			BRASS-TIN	42904-2
			BRASS-SILVER	42904-3

SUPERSEDED BY 60249-2

PRINT LAST DIMENSIONS IN INCHES. DO NOT SCALE PRINT.

©1965 BY AMP INCORPORATED, ALL RIGHTS RESERVED. AMP PRODUCTS COVERED BY PATENTS AND/OR PATENTS PENDING.

**CUSTOMER COPY
REFERENCE ONLY**

MATERIAL AND FINISH

WIRE RANGE INSULATION TYPE



CLASS

TYPE

F	REVISED PER ECR-13-005733	KH	PD	30AUG13
LTR	REVISION RECORD	DR	CHK	DATE
DR	C. MEYERS 6-7-65	DE		
CHK	R. SVENDEL JR 6-8-65	APP		

TOLERANCE EXCEPT AS NOTED	SCALE	LOC	NO	REV
± .015 ± 1° 0'	5-1	A A	42904	F
NAME "250" SERIES FASTIN-FASTON RECEPTACLE				